

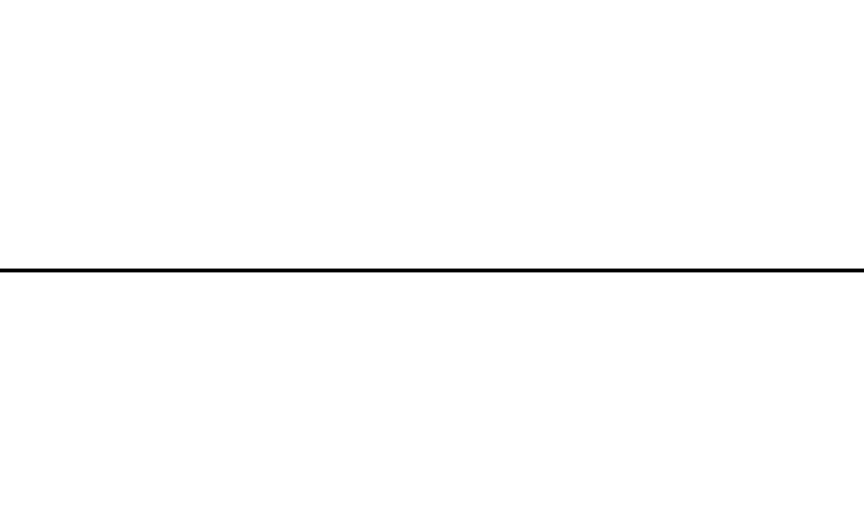
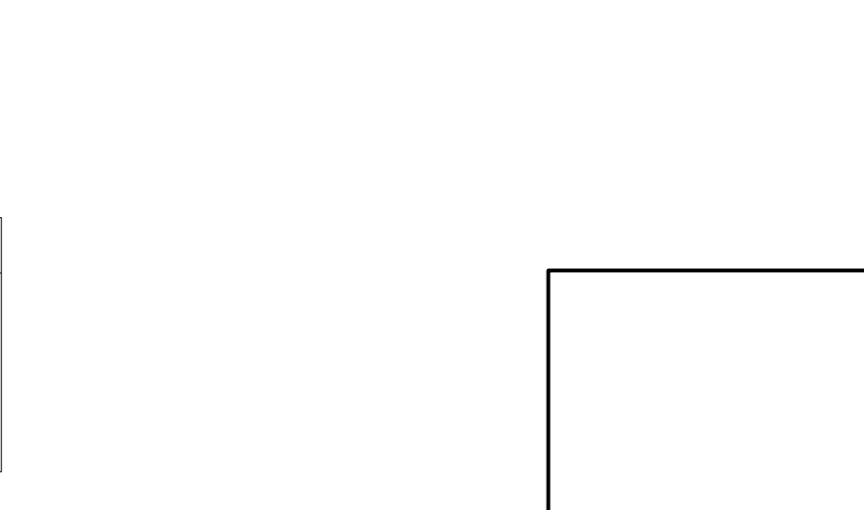
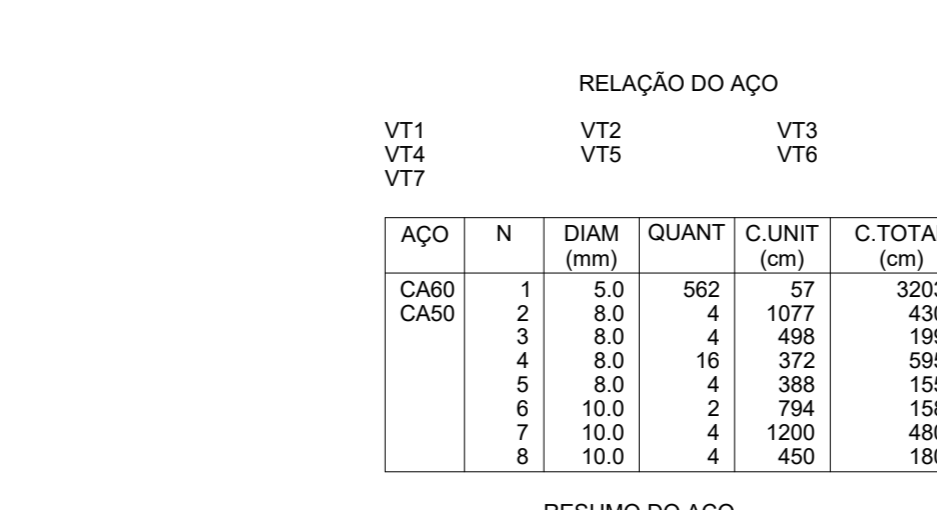
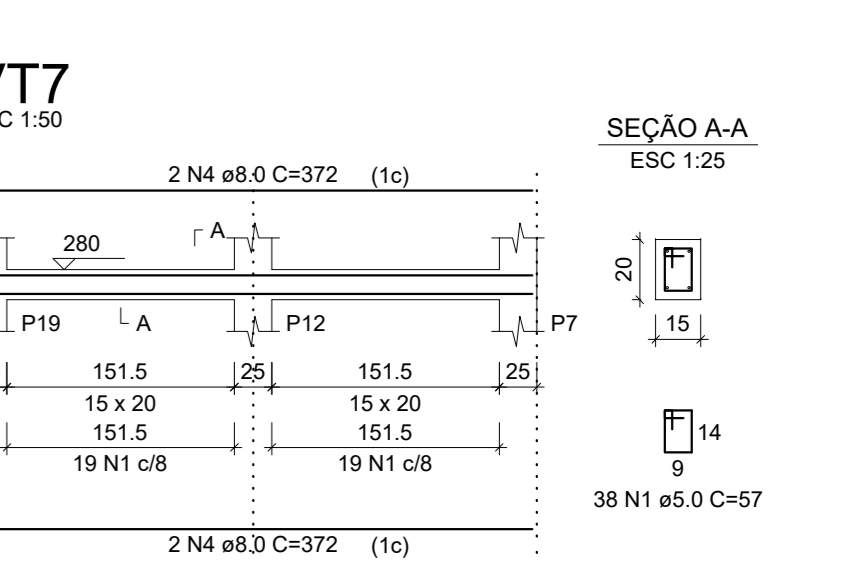
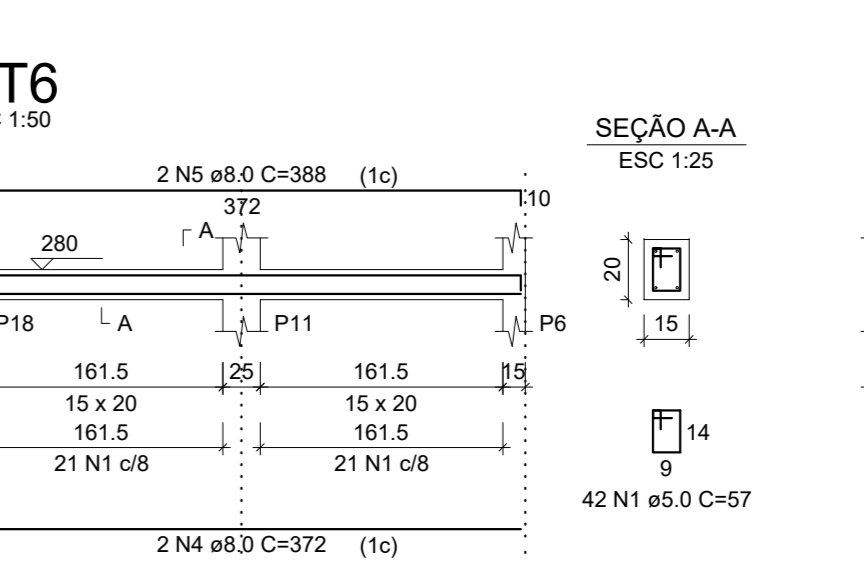
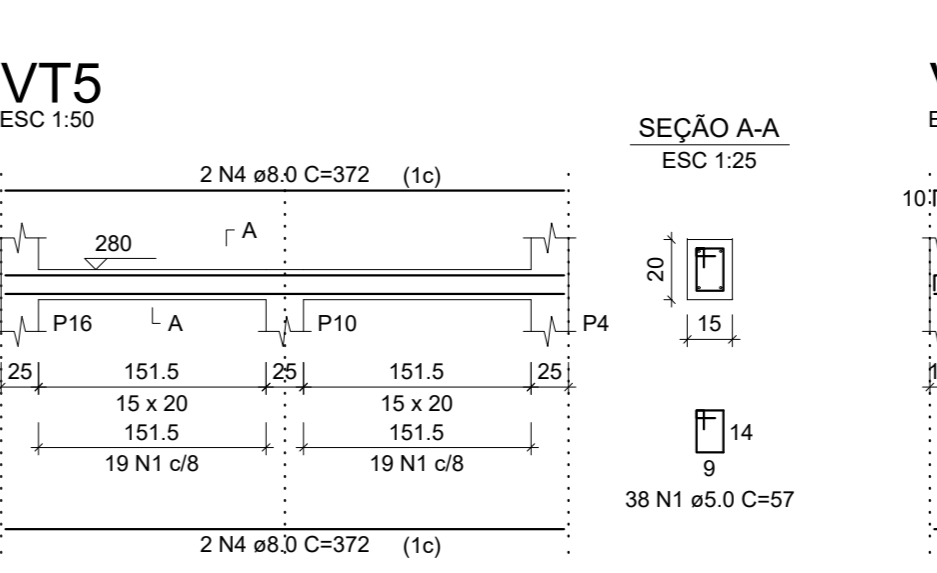
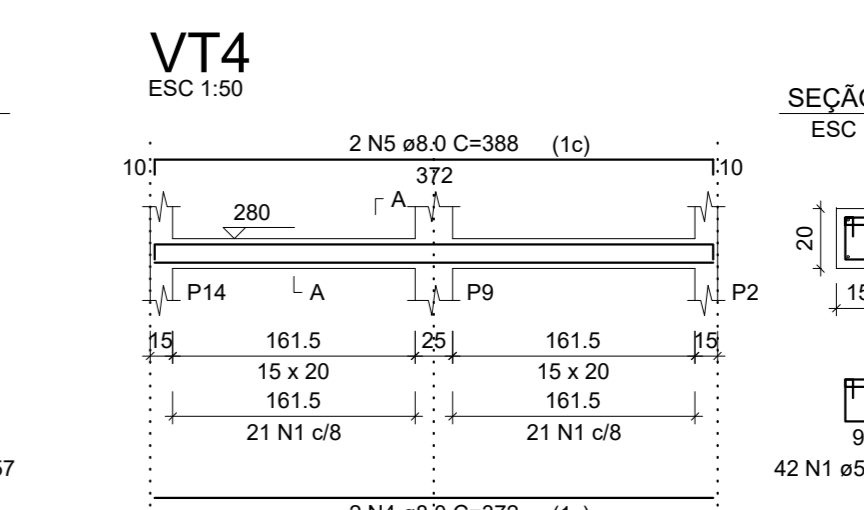
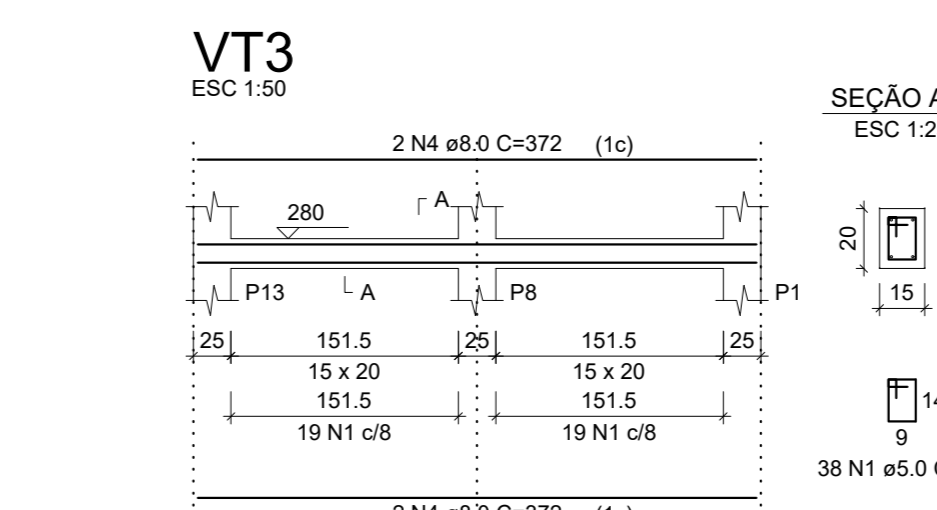
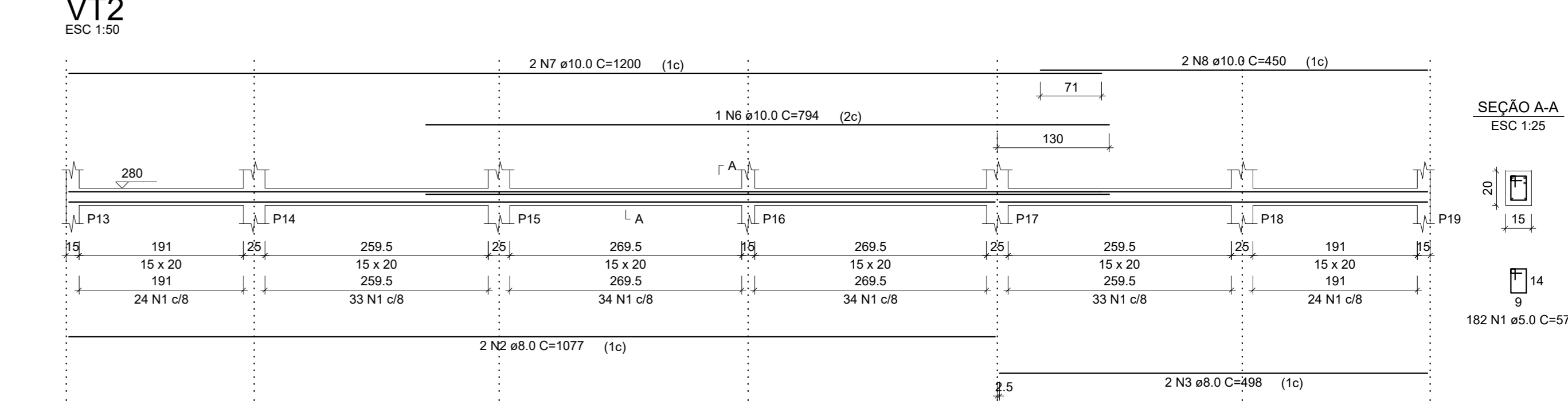
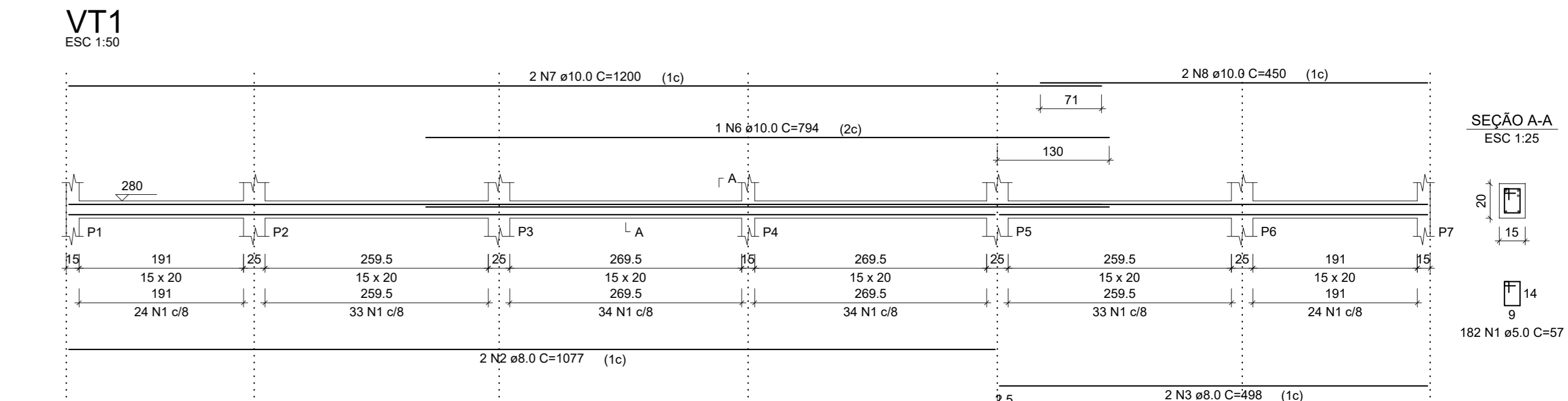
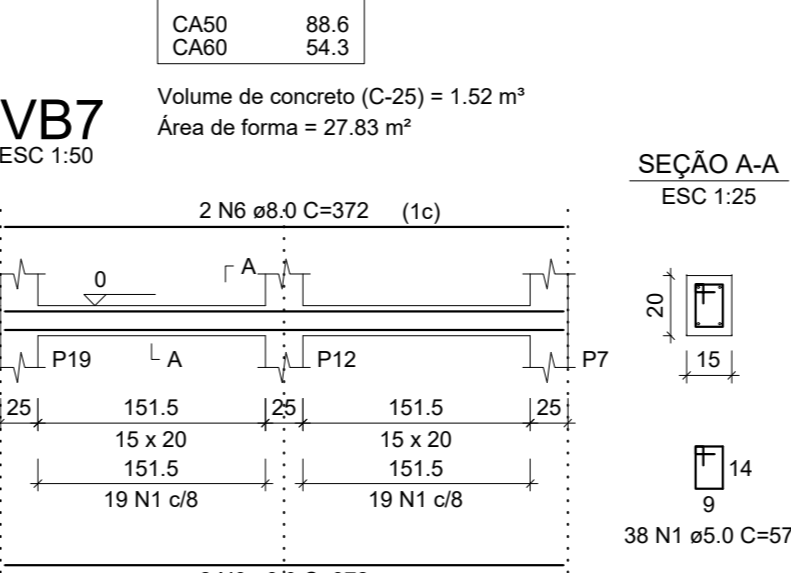
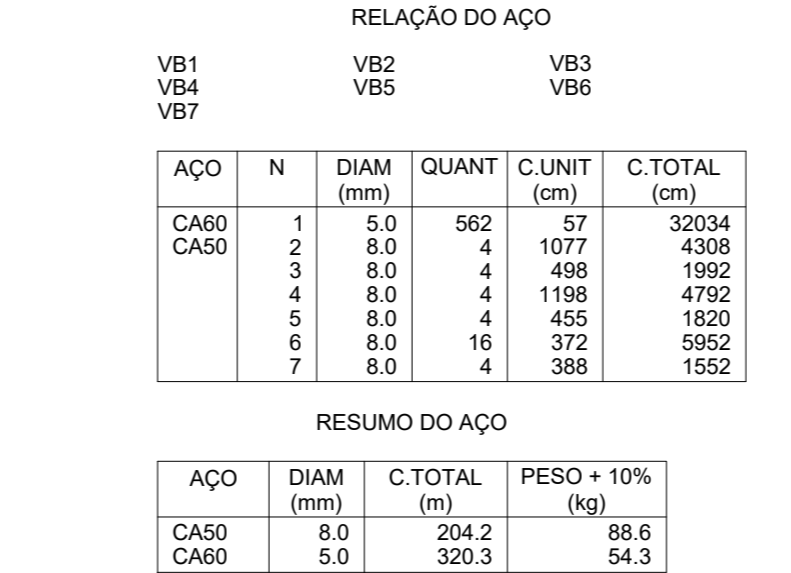
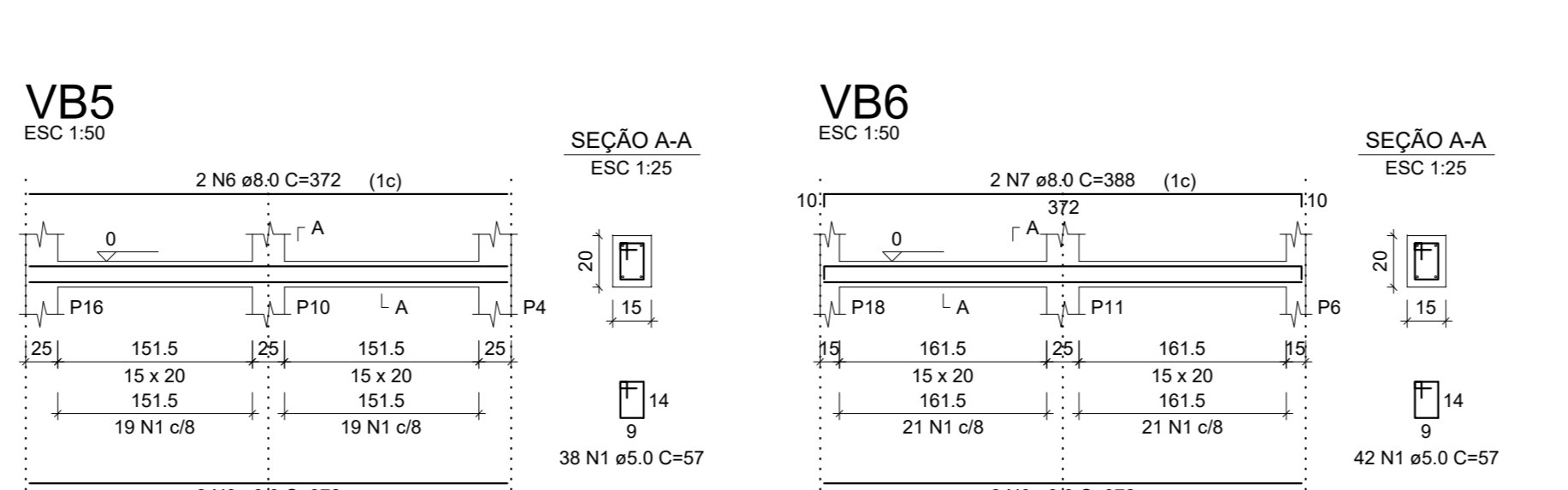
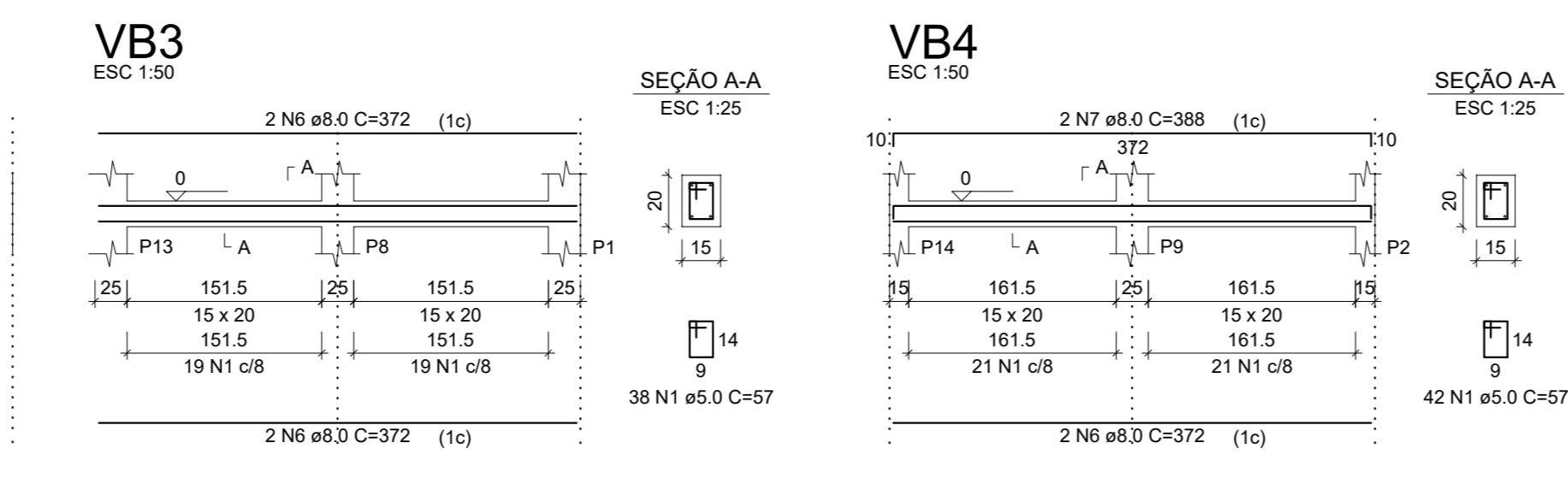
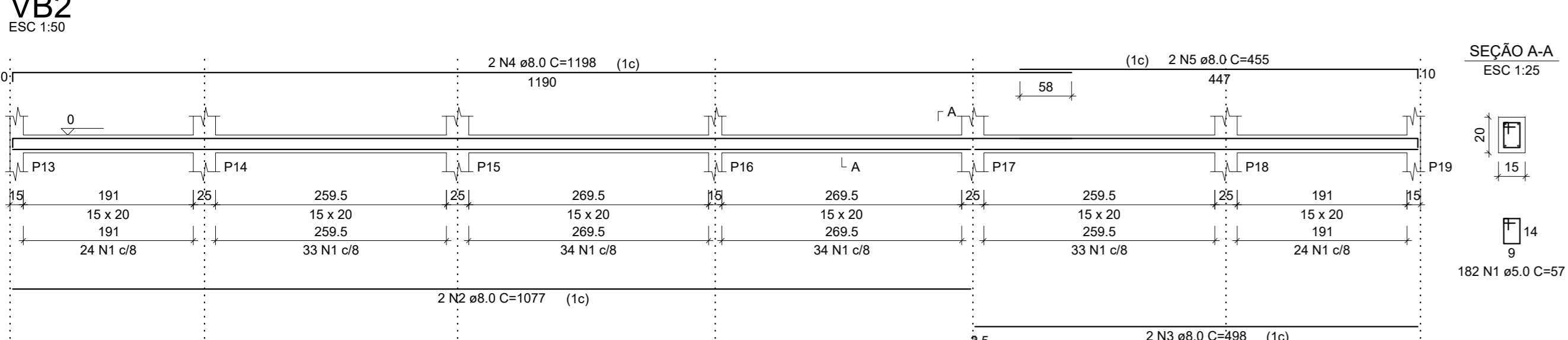
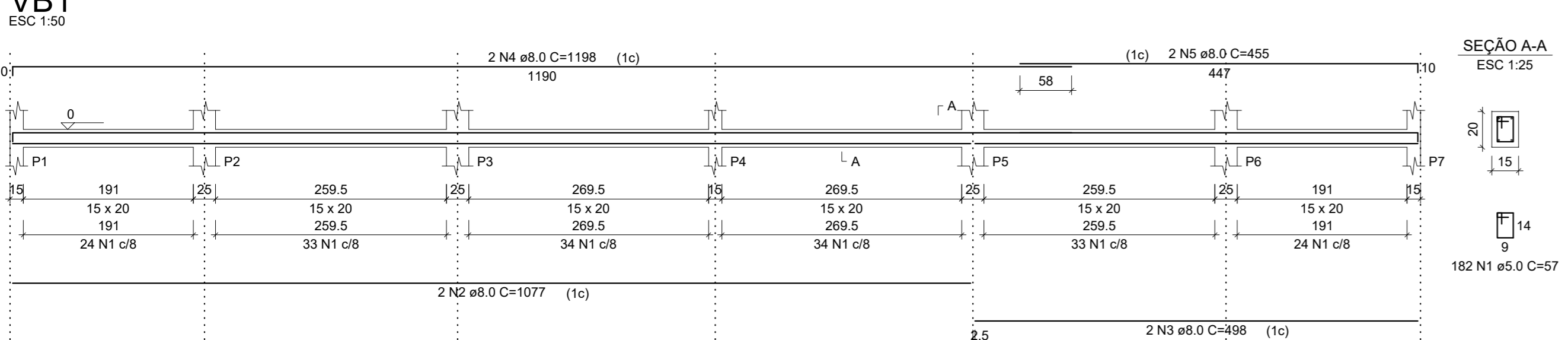
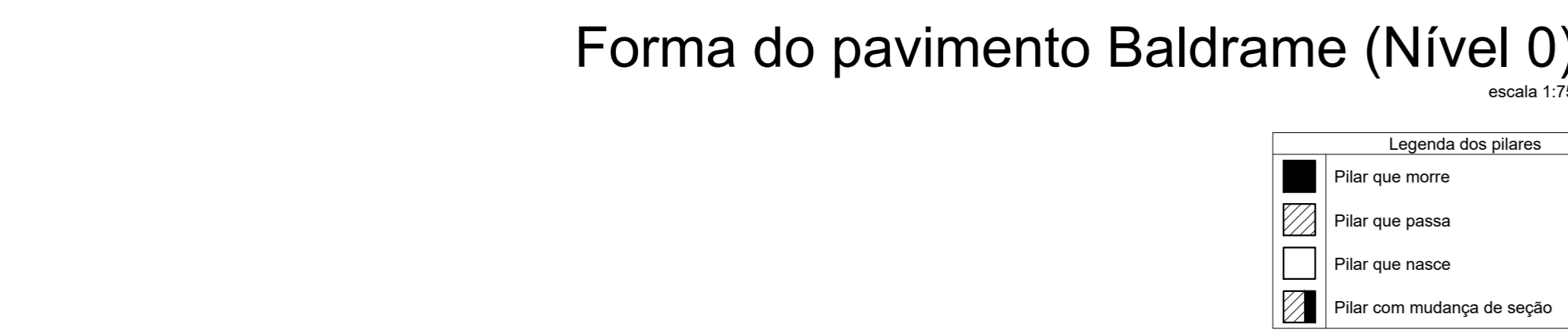
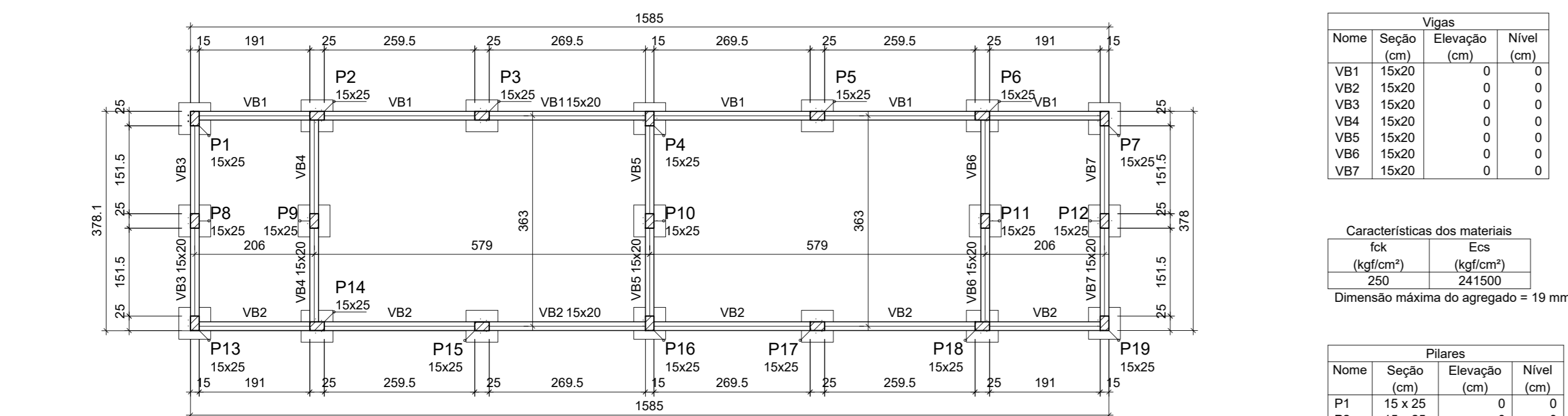
Nome Seção X Y Carga Max. Carga Min. Pilar Mx Máximo (kgf/m) My Máximo (kgf/m) Fx Máximo (t) Fy Máximo (t) Lado B Lado H n1 / h2 ne Bloco

Os esforços indicados nesta tabela são os valores máximos obtidos pela envoltória de todas as combinações definidas para as fundações. Para análises complementares, deve-se consultar o relatório de esforços na fundação, que apresenta os valores calculados para cada combinação.

Simbologia Estacas

Nome d Quantidade

E30 25.00 19



RESPONSÁVEL TÉCNICO:

CARLOS ALBERTO MAIA TABALIPA

ENEP CIVIL CREA 6695-DPR

OBRA:

REFORMA DO ESTÁDIO MUNICIPAL JORGE BANUTH

LOCAL:

RUA ANTONIO DE MOURA BUENO, IBAITI - PR

DESENHISTA:

WESLEY FERREIRA

ESCALA:

INDICAÇÃO

DATA:

MAIO 2016

PROJETO:

ESTRUTURAL VESTIÁRIOS

FRANCHA:

1/3

APROVAÇÃO: